


RESEARCH

Open Access



Initial absolute monocyte count as an immune biomarker for clinical response in acute myeloid leukemia with monocytic differentiation

Ahmed Embaby^{1*} , Ayman Fathy¹, Mohammad Al-Akkad¹, Ahmad Baraka², Taiseer Ibrahim³, Nahla Zidan², Mohamed Refaat⁴ and Haitham Elsheikh¹

Abstract

Background: Absolute monocyte count (AMC) correlates with survival outcomes in various hematologic malignancies. However, its role in myeloid malignancies including AML needs to be highlighted. So, this prospective cohort study aimed to assess the effect of AMC on the treatment outcome and survival in a 56 adult de novo AML patients with monocytic differentiation, admitted to the Clinical Hematology Unit, Internal Medicine Department, in a tertiary referral hospital in Egypt, from July 2016 to June 2019.

Results: The initial AMC was measured either by manual differential or the hematology automatic analyzer Sysmex XN-2000 and patients were classified by using receiver operating characteristic curve into two groups monocytopenic ($\leq 4 \times 10^9/L$) and non-monocytopenic ($> 4 \times 10^9/L$) group; including 24 (42.9%) and 32 (57.1%) patients, respectively. After a median follow up period of 7.7 (range 0.5–33.2) months, the monocytopenic group was associated with a significantly higher CR rate ($P = 0.019$), with a lower death as well as relapse and early relapse rates ($P = 0.011$, 0.033, and 0.002, respectively). Moreover, low initial AMC along with intensive induction were independently associated with complete response to induction chemotherapy with HR, 5.04 [1.37–18.58], $P = 0.015$, and 5.67 [1.48–21.71], $P = 0.011$, respectively by using the multivariate logistic regression model. Regarding survival, the monocytopenic group was associated with a better 3-year disease-free survival rate ($P = 0.011$) in univariate Cox regression only but did not reach significance in the multivariate model and did not affect the overall survival as well.

Conclusion: Initial AMC was found to be an independent prognostic immune biomarker for treatment response in AML patients with monocytic differentiation. However, it did not appear as an independent predictor of survival in a multivariate analysis.

Keywords: Acute myeloid leukemia, Monocytic differentiation, Immune biomarker, Response, Absolute monocyte count

* Correspondence: Dr.embaby@yahoo.com; Dr.embaby@zu.edu.eg

¹Clinical Hematology Unit, Internal Medicine Department, Faculty of Medicine, Zagazig University, Zagazig, Al-Sharika 44519, Egypt
Full list of author information is available at the end of the article

Background

Acute myeloid leukemia (AML) is the most common acute leukemia in adults, accounting for approximately 78.3% of cases in this group, 1.2% of all cancers, and 34.7% of all leukemias; approximately 21,450 new cases of AML have been diagnosed annually in the USA [1].

The advent of novel therapies has significantly changed the AML outcome. However, AML remains largely incurable with a heterogeneous response to treatment [2]. Scant data are available on the contribution of the tumor micro-environment (TME) reflected in the circulating monocytes as a prognostic indicator for survival in AML [3]. Absolute monocyte count (AMC) correlates with survival outcome in lymphoma subtypes [4–6], multiple myeloma [7], and chronic lymphocytic leukemia [8]. Monocytes are key components of the innate immune system with dramatic increase with certain hematologic malignancies, particularly clonal monocytosis, and monocytic or myelomonocytic leukemia [9, 10]. Yet, their role needs to be defined in myeloid malignancies especially in AML with monocytic differentiation which includes French-American-British (FAB) M4 and M5 subtypes and shows distinct clinical features, such as the high risk of extramedullary disease, high leukocyte count, and coagulation abnormalities [11]. Accordingly, we assessed the effect of initial AMC on the treatment outcome and survival in AML patients with monocytic differentiation.

Methods

Patients

The study was designed to prospectively evaluate a cohort of 56 newly diagnosed adult patients having primary AML with monocytic differentiation with the exclusion of acute promyelocytic leukemia. All were 18-year-old or older with good performance status (ECOG-PS) [12], and treated at the Clinical Hematology Unit in a tertiary referral hospital in Egypt, from July 2016 to June 2019.

Diagnosis and classification

The FAB classification [13], WHO 2016 criteria [14], and the International System for Human Cytogenetic Nomenclature [15] were the basis for AML diagnosis and subtyping using the morphological, immunophenotypic, and cytogenetic characteristics of leukemic blasts. In accordance with the Declaration of Helsinki, we collected written informed consent from each patient before starting the study with the agreement of our university Institutional Review Board.

Data collection

We gathered patients' clinical and laboratory data like age, gender, hemogram namely total leucocytic and monocytic counts, hemoglobin, platelet count, and the percentage of circulating and bone marrow (BM) blast

cells; TLC and its differential including AMC were determined by hematology automatic analyzer Sysmex XN-2000 (Sysmex, Kobe, Japan) and confirmed by manual differential in cases of abnormal values (flagged values) or very low count that could not be detected by the device.

Treatment plan

All patients were given induction chemotherapy by an anthracycline and cytarabine-based induction chemotherapy regimen; with high-intensity therapy, an induction 3 + 7 regimen consisting of continuous infusion cytarabine (100 mg/m²) daily for seven consecutive days combined with 3 days of doxorubicin (25 mg/m²). Elder patients were treated by low-intensity therapy; lower dose chemotherapy or hypomethylation agents. Patients who achieved complete remission received post-induction consolidation therapy which is comprised of three to four courses of high-dose cytarabine (1–2 g/m² every 12 h on days 1, 3, and 5; total, 12 g/m²) [16].

Criteria for therapy outcomes

Response to induction therapy was assessed after one or two courses of chemotherapy. Patients are considered to be in complete remission (CR) state if their BM blasts were below 5% along with evidence of the maturation of cell lines and normalization of peripheral blood (PB) counts and no evidence of extramedullary leukemia [17]. Primary induction failure (PIF) was defined as not achieving CR within two cycles of chemotherapy. Whereas, patients with early death (ED) were those who die in the first 30 days after initiating chemotherapy [18]. Hematological relapse was considered when more than 5% blasts were seen in BM aspirates or the appearance of extramedullary leukemia, while early relapse was considered if it occurred within 6 months of CR. Regarding survival, we calculated disease-free survival (DFS) from the CR date to the date of relapse or death, and overall survival (OS) from the initial diagnosis date to the time of death or last visit.

Follow-up plan

After completion of consolidation, clinical and laboratory assessments including complete blood count (CBC), with blood smear, were done monthly for 2 years, then quarterly or biannually onward till the study came to an end. BM aspiration and biopsy only done if the peripheral smear is abnormal or cytopenias develop to rule-out relapse as recommended by the NCCN guidelines [19]. Patients who underwent allogeneic hematopoietic cell transplantation (HCT) were censored at the time of transplantation.

Statistical analysis

A receiver operating characteristic (ROC) curve indicated that the sum of sensitivity and specificity reached a maximum for the value of AMC when $4 \times 10^9/L$ was used as a cutoff point for survival outcome as binary endpoints and subsequently this cutoff treated as a binary variable to group patients into monocytopenic ($AMC \leq 4 \times 10^9/L$) or non-monocytopenic ($AMC > 4 \times 10^9/L$) groups. Shapiro test was applied to test data for normal distribution. Chi-square or Fisher's exact tests were utilized to compare qualitative variables, while quantitative non-parametric variables were compared by the Mann–Whitney test. Spearman's Rho test was used for linear correlation. Furthermore, independent predictors for the response were determined by enter multivariate logistic regression analysis model. Kaplan–Meier analyzer was used to calculate the OS and DFS with the log-rank test to compare survival curves. Patients undergoing allogeneic HCT were censored at the time of transplantation and the Cox-proportional hazards model was used for univariate and multivariate analysis. All

tests were two-sided and a statistically significant difference was reached if P value ≤ 0.05 . All statistical analyses were done using MedCalc Statistical Software (MedCalc16.4., Ostend, Belgium) and Statistical Package for Social Sciences (SPSS 20 Inc. Chicago, IL, USA).

Results

Fifty-Six previously untreated adult patients with de novo AML with monocytic differentiation were classified according to their initial AMC (Fig. 1) into 2 groups monocytopenic ($\leq 4 \times 10^9/L$) and non-monocytopenic ($> 4 \times 10^9/L$), including 24 (42.9%) and 32 (57.1%) patients, respectively (Table 1).

Baseline characteristics

The median age was 46 years (range, 19–75 years), with 50/56 (89.3%) patients were ≤ 60 years of age and 6/56 (10.7%) were > 60 years. Most of them had PS range from 0 to 1, 46/56 (82.1%) with male-to-female ratio of [1:1]. The median initial TLC of the entire cohort was $20 \times 10^9/L$ (range, 1.7 – $152.5 \times 10^9/L$), 7 g/dL for

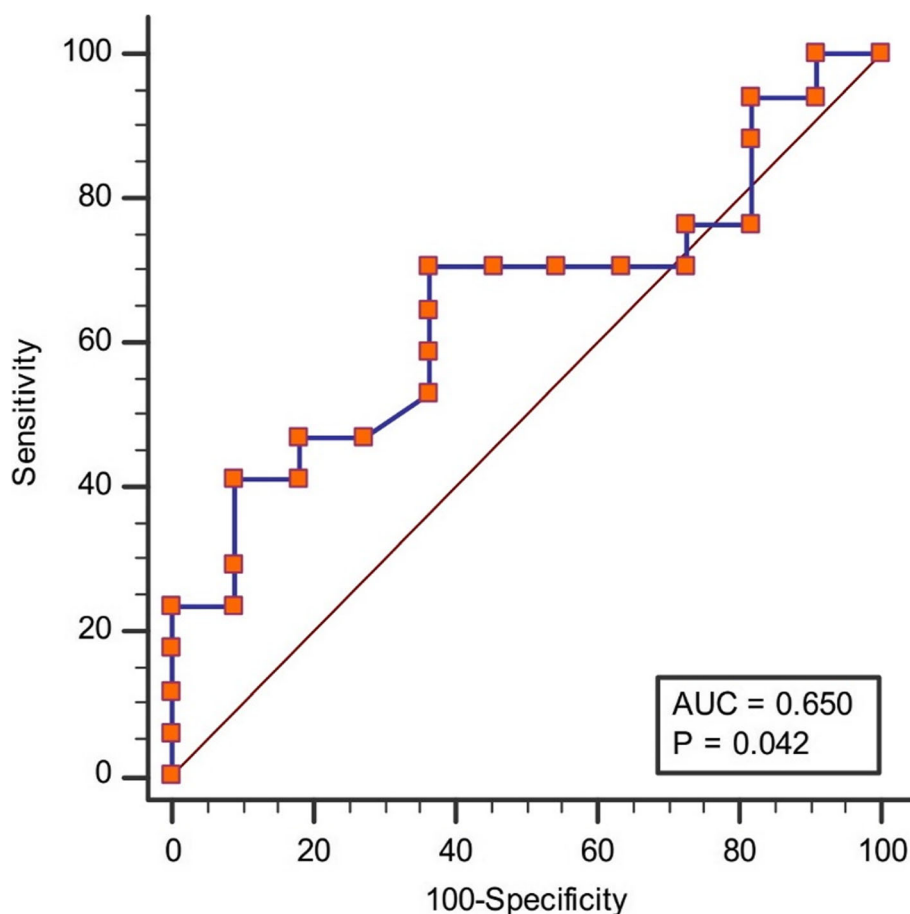


Fig. 1 Initial AMC cut-off point: receiver operating characteristic curve (ROC) for initial AMC (absolute monocyte count) level for survival analysis, AMC at cutoff $> 4 \times 10^9/L$ had an AUC of 0.65 (95% CI 0.511 to 0.772) with a sensitivity of 70.59% (95% CI 52.5–84.9%) and a specificity of 63.64% (95% CI 40.7–82.8%), $P = 0.042$

Table 1 Patients' clinical characteristics and outcome [median (range) or *n* (%)] in both groups

Parameters		Groups		Total <i>N</i> = 56	<i>P</i> value
		Monocytopenic <i>N</i> = 24	Non-Monocytopenic <i>N</i> = 32		
Age, years		48 (20–61)	42.5 (19–75)	46 (19–75)	0.371
Age	≤ 60Y	22 (91.7%)	28 (87.5%)	50 (89.3%)	0.618
	> 60Y	2 (8.3%)	4 (12.5%)	6 (10.7%)	
Sex	Female	12 (50.0%)	16 (50.0%)	28 (50.0%)	1
	Male	12 (50.0%)	16 (50.0%)	28 (50.0%)	
PS	0–1	20 (83.3%)	26 (81.3%)	46 (82.1%)	0.84
	> 1	4 (16.7%)	6 (18.8%)	10 (17.9%)	
FAB subtype	M4	20 (83.3%)	20 (62.5%)	40 (71.4%)	0.088
	M5	4 (16.7%)	12 (37.5%)	16 (28.6%)	
Cytogenetic Risk	Failed	6 (25.0%)	8 (25.0%)	14 (25.0%)	0.183
	Favorable	2 (8.3%)	0 (0.0%)	2 (3.6%)	
	Intermediate	12 (50.0%)	22 (68.8%)	34 (60.7%)	
	Unfavorable	4 (16.7%)	2 (6.3%)	6 (10.7%)	
Intensive induction		16 (66.7%)	22 (68.8%)	38 (67.9%)	0.869
Initial TLC × 10 ⁹ /L		6.8 (1.7–23)	50 (10–152.5)	20 (1.7–152.5)	< 0.001
Initial AMC × 10 ⁹ /L		1.1 (0.1–4)	14.7 (5.1–35.1)	6.1 (0.1–35.1)	< 0.001
Initial HB g/dL		7 (5–11)	7.5 (4–10)	7 (4–11)	0.893
Initial PLT × 10 ⁹ /L		25 (5–117)	42 (12–576)	33 (5–576)	0.014
Initial PB blast %		35 (0–88)	49.5 (13–94)	40 (0–94)	0.034
Initial BM blast %		54 (23–90)	56 (21–83)	55 (21–90)	0.504
Primary induction failure		8 (33.3%)	18 (56.3%)	26 (46.4%)	0.089
Early death		2(8.3%)	2(6.3%)	4 (7.1%)	0.765
Complete remission		18(75.0%)	14 (43.8%)	32 (57.1%)	0.019
Underwent HCT		10 (41.7%)	2(6.3%)	12 (21.4%)	0.001
Death		10(41.7%)	24 (75.0%)	34 (60.7%)	0.011
		<i>N</i> = 18	<i>N</i> = 14	Total <i>N</i> = 32	
Relapse ^a		6 (33.3%)	10 (71.4%)	16 (50.0%)	0.033
Early relapse ^b		0 (0.0%)	8 (80.0%)	8 (50.0%)	0.002

PS performance status, FAB French-American-British, BM bone marrow, PB peripheral blood, TLC total leucocytic count, Hb hemoglobin, PLT platelets, HCT hematopoietic cell transplantation

^aRelapse calculated among patients who achieved CR

^bEarly relapse estimated among relapsed patients

hemoglobin [range, 4–11 g/dL], and 33 [5–576 × 10⁹/L] for platelets. Meanwhile, the median circulating PB blasts was 40% (range, 0 to 94%), while the BM blasts were 55% (range, 21–90%). The median initial AMC for all patients was 6.1 × 10⁹/L, with range [0.1–35.1 × 10⁹/L]. Regarding FAB classification, 40 cases were M4 (71.4%), with median initial AMC, 4.6 [range, 0.1–35.1 × 10⁹/L], and 16 (28.6%) were M5%, with median AMC, 15.8 [range, 0.4–29.4 × 10⁹/L], *P* = 0.046 (Fig. 2). Furthermore, a direct significant linear correlation was noticed between the initial AMC and TLC (*P* < 0.001), but not the other parameters (Fig. 3 and Table 2).

Chromosomal analysis revealed that two (3.6%) patients had a favorable cytogenetic profile and 34 (60.7%) had an intermediate while six (10.7%) patients had unfavorable cytogenetics. Failure to attain cytogenetics was noticed in 14 (25.0%) patients. After initial workup, 38 (67.9%) patients received intensive induction chemotherapy and 18 (32.1%) patients were candidates only for less intensive chemotherapy. Moreover, the non-monocytopenic group was significantly associated with higher AMC, platelet (PLT) count, and PB blast (*P* < 0.001, *P* < 0.001, *P* = 0.014, and *P* = 0.034, respectively). However, no significant statistical difference was found with other variables (Table 1).

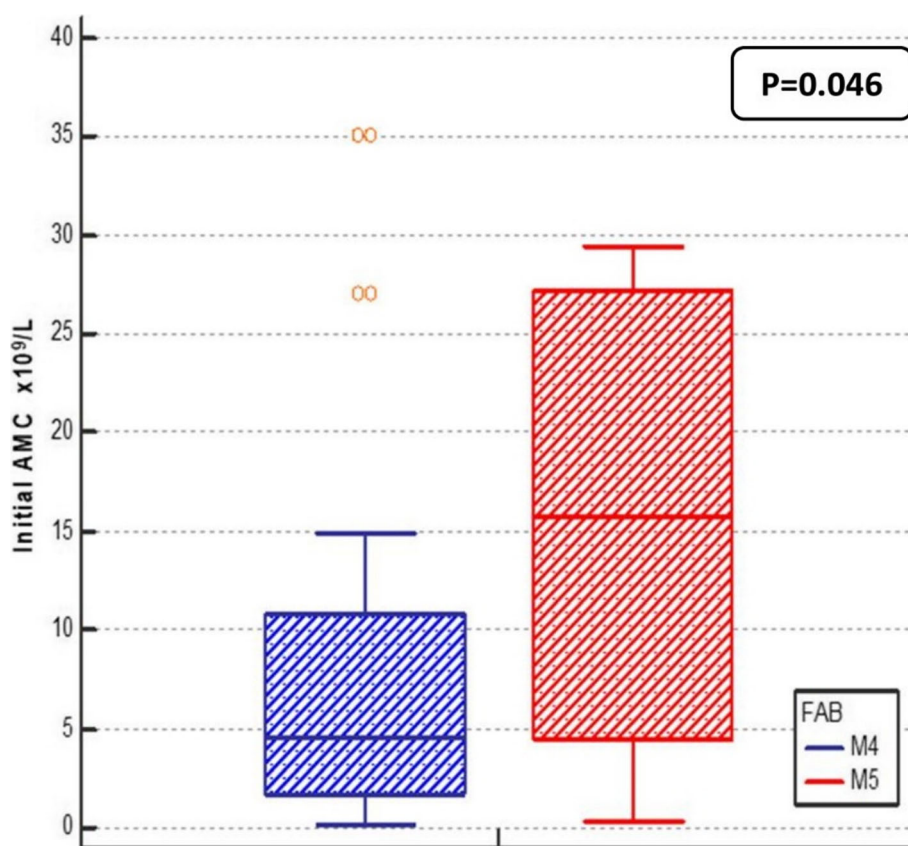


Fig. 2 Comparison between initial AMC level in AML-subgroups: Box-plot diagram represents the range of initial AMC (absolute monocyte count) level as regard FAB subtype, $P = 0.046$; the upper and lower line in each box represents the 75th and 25th percentile respectively while the line through each box indicates the median. Whiskers represent the range between the minimum and maximum values excluding outliers (rounded markers)

Remission induction outcome

As shown in Table 1, 32 (57.1%) patients achieved CR, 26 (46.4%) patients did not achieve CR after at least two cycles of induction therapy (PIF), and four patients (7.1%) died early in the first 30 days of induction (early death) and by the end of follow-up, a total 34/56 (60.7%) of patients died. On following up the cases that achieved CR, 16/32 (50.0%) cases were relapsed, half of them relapsed within 6 months (ER), and 12 (21.4%) patients underwent HCT either after CR₁ in those with high-risk cytogenetics or CR₂ in relapsed patients. Moreover, the monocytopenic group was associated with significantly higher CR and HCT rates ($P = 0.019$ and 0.001 , respectively), with a significantly lower death rate as well as relapse and early relapse rates ($P = 0.011$, 0.033 and 0.002 , respectively). While no significant difference was found regarding PIF or ED.

Response analysis

Binary logistic regression was performed to ascertain the effects of different variables on the likelihood that participants achieved CR and only the initial AMC and intensive

induction therapy were independently associated with response to therapy in multivariate analysis with HR, 5.04 [1.37–18.58, $P = 0.015$] and 5.67 [1.48–21.71, $P = 0.011$], respectively (Table 3).

Survival analysis

Patients were followed up for a median period of 7.7 months, range (0.5–33.2 months). The 3-year overall survival rate was 0.0% with a mean OS of 11.2 ± 1.3 months (95% CI 8.6–13.9 months) and the median was 10 ± 1.6 months (95% CI 6.9–13.1 months) while the 3-year disease-free survival rate was 0.0% with a mean of 12.1 ± 1.5 months (95% CI 9–15.1) and the median was 9.3 ± 1.9 months (95% CI 5.5–13.1) (Table 4 and Fig. 4a, b). Kaplan–Meier analysis showed no statistical difference in 3-year OS between the monocytopenic and non-monocytopenic group or M4 and M5 subtypes ($P = 0.076$ and 0.725 , respectively) (Table 4 and Fig. 5a, b). Moreover, a statistical difference in 3-year DFS was found between both groups and M4 and M5 subgroups ($P = 0.011$, and 0.001 , respectively) (Fig. 6a, b).

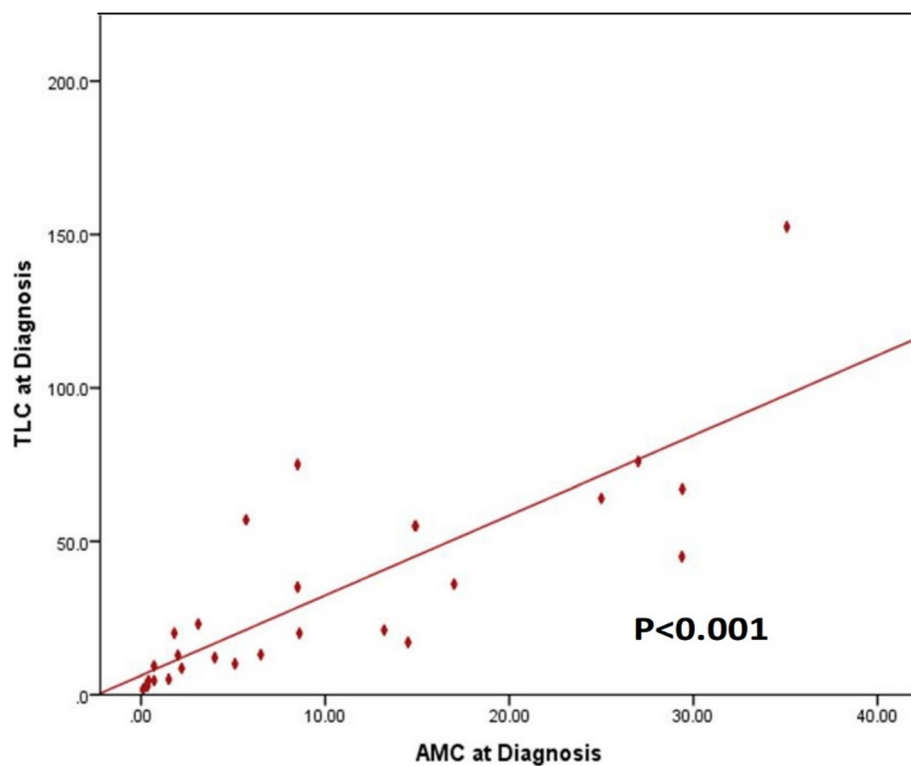


Fig. 3 Linear correlation between the initial AMC (absolute monocyte count) and TLC (total leucocyte count)

The Cox proportional hazards model evaluating the different variables affecting survival was summarized in Table 5 and showed that in univariate analysis, the following clinical parameters were significantly associated with OS, PIF, and initial platelet count ($P < 0.001$ and 0.002 , respectively). However, in multivariate analysis, only PIF was independently associated with shorter OS (HR; 6.9 [2.8–17.8], $P < 0.001$). Regarding the DFS, initial AMC was found to have survival impact only in the univariate module ($P = 0.021$) but, it did not achieve significance in multivariate analysis.

Table 2 correlation between the Initial $\text{AMC} \times 10^9/\text{L}$ and other studied parameters

Variable	Initial $\text{AMC} \times 10^9/\text{L}$	
	<i>r</i>	<i>P</i>
Age	− 0.001	0.997
PS	+ 0.119	0.388
Initial PB blast %	+ 0.202	0.16
Initial BM blast %	− 0.165	0.242
Initial $\text{TLC} \times 10^9/\text{L}$	+ 0.881	< 0.001
Initial Hb g/dL	− 0.096	0.482
Initial $\text{PLT} \times 10^9/\text{L}$	+ 0.16	0.24

r correlation coefficient, *AMC* absolute monocyte count, *PS* performance status, *BM* bone marrow, *PB* peripheral blood, *TLC* total leucocytic count, *Hb* hemoglobin, *PLT* platelets

Discussion

An accurate prognostic assessment is fundamental to provide better clinical management and enhance the outcome of AML especially in an important subgroup like those with monocytic differentiation that carry high-risk features, including higher tumor burden represented in the brisk increase in leukocyte count, extramedullary disease, and coagulation abnormalities [11]. Furthermore, peripheral blood monocytes, the mirror of the immunosuppressive AML microenvironment [20, 21], have been tested as a prognostic factor for different types of hematological malignancies including AML [3–8]. However, that role was not clearly studied in M4/M5 patients. So, in our study, we shed some light on the significance of the initial AMC in a 56 cohort of newly diagnosed AML patients with monocytic differentiation.

To the best of our knowledge, we are the first prospective study to investigate the significance of the initial AMC in this subset of patients and our main findings revealed that in AML patients with monocytic differentiation, the monocytopenic group (defined by ROC curve as those with $\text{AMC level} \leq 4 \times 10^9/\text{L}$) was significantly associated with higher CR rates, and lower death, relapse, and early relapse rates, with longer DFS.

Few published studies investigated the prognostic value of AMC in AML patients; one main study was

Table 3 Univariate and multivariable logistic regression analyses for response to therapy (achievement of CR)

Covariates	Univariate analysis		Multivariate analysis	
	OR (95% CI)	P	OR (95% CI)	P
Age (> 60Y vs. ≤ 60Y)	3.00 (0.50–17.95)	0.229		
Sex (Male vs. Female)	1.00 (0.35–2.88)	1		
PS (> 1 Y vs. ≤ 1)	2.33 (0.58–9.43)	0.234		
FAB (M4 vs. M5)	0.91 (0.29–2.82)	0.869		
Intensive induction (yes vs no)	4.33 (1.31–14.31)	0.016	5.67 (1.48–21.71)	0.011
Initial peripheral blast %	1.00 (0.98–1.02)	0.948		
Initial bone marrow blast %	1.00 (0.97–1.02)	0.779		
Initial TLC × 10 ⁹ /L	1.02 (1.00–1.04)	0.069		
Monocytopenic (yes vs. no)	3.86 (1.21–12.28)	0.022	5.04 (1.37–18.58)	0.015
Cytogenetics (favorable vs others)	0.00 (0.0001–0.002)	0.999		

PS performance status, FAB French-American-British, TLC total leucocytic count, OR odds ratio, 95% CI 95% confidence interval

done by Feng and coworkers, who found that high pretreatment AMC was associated with worse OS as compared with normal AMC patients [3]. This disagreement with our findings might be due to several factors like they used $0.8 \times 10^9/L$ as the cut-off point of AMC for survival outcome of AML patients obtained by the ROC curve. They included different FAB subtypes, unlike our study which focused on M4/M5 patients. Moreover, they carried out their study on Chinese patients, unlike ours which were all Egyptians, thus these racial/ethnic differences not only impact the AML survival rates but also the distinct monocyte behavior involving pro- and anti-tumor immunity, tumor advancement, and prognosis. In addition to that, they used a larger sample size with a longer follow up period, despite the retrospective design of the study that leads to selection bias.

Also, a recent study reported that high AMC was associated with lower CR rates, shorter OS, and leukemia-free survival in AML patients [22]. Despite having similar findings with our study, they were different in the retrospectively

selected population that included all subtypes of AML together with M4/M5. Besides using different cut off value of the AMC. On the other hand, Bar and his colleagues reported that the pretreatment AMC was not associated with any statistically significant difference regarding OS or DFS rates [23]. This discrepancy with our findings might be owing to the inclusion of secondary AML along with all FAB subtypes and the retrospective selection of patients in remission in their study.

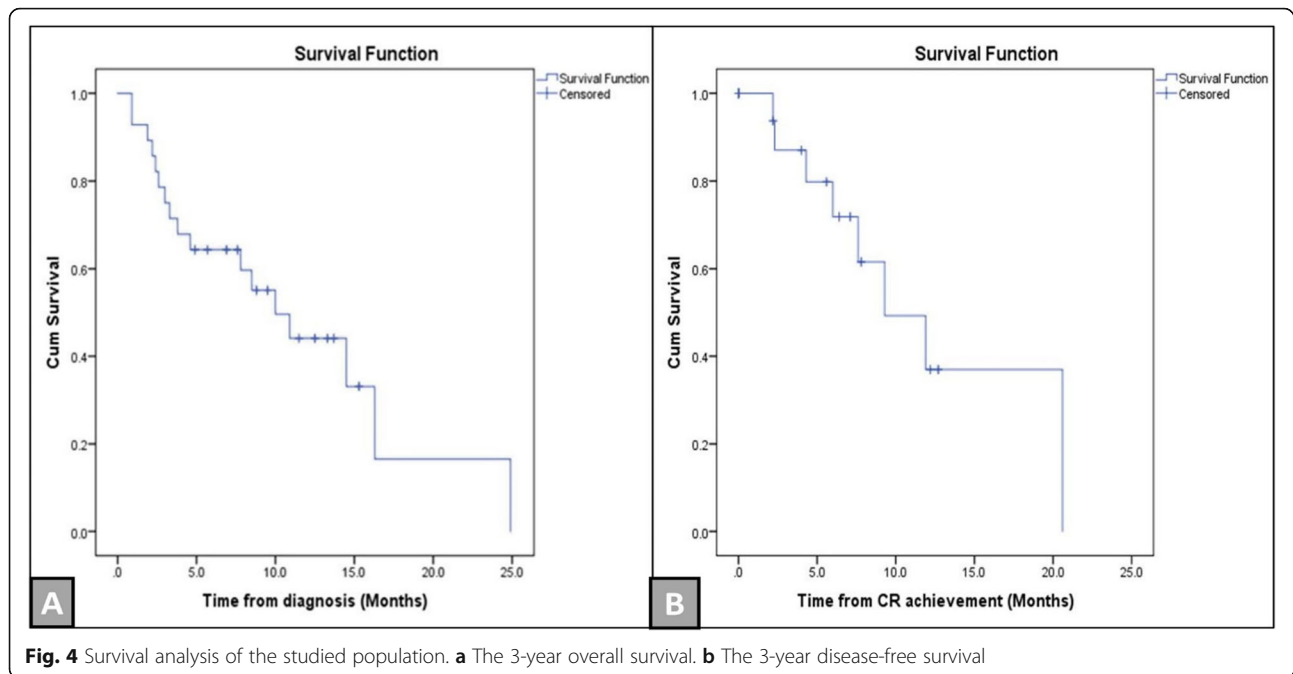
Remarkably in our M5 subgroup, higher initial AMC levels, as well as poor DFS rates were noticed compared to M4 subgroup, that could be explained by a different study that recognized higher TGF- β levels in M5 than M4 which play a physiologic role in monocyte maturation, differentiation, and recruitment in leukemia-associated macrophages (LAMS) with subsequent poor outcome [21, 24].

The intrinsic relationship between peripheral monocytes and clinical outcomes in patients with AML derived mainly from monocyte-derived mononuclear phagocytes

Table 4 The 3-year overall and Disease-free survival rates in both groups

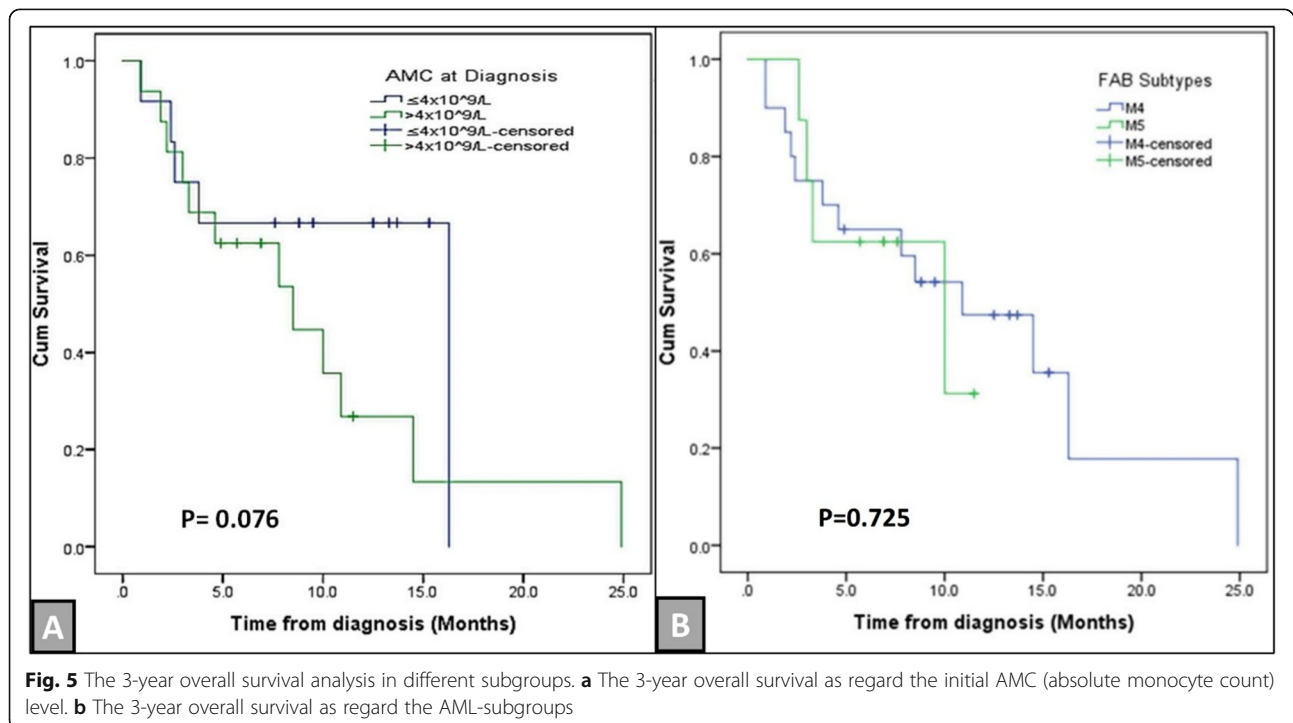
Groups	Survival rate %	P value	Survival time, months			
			Mean		Median	
			Estimate ± SE	95% CI	Estimate ± SE	95% CI
The 3-years OS%						
Monocytopenic	0.00%	0.076	11.7 ± 1.4	8.9-14.4	16.3 ± 0	-
Non-monocytopenic	13.40%		9.6 ± 1.5	6.6-12.5	8.5 ± 2.1	4.3–12.7
Overall	0.00%		11.2 ± 1.3	8.6–13.9	10	6.9–13.1
The 3-years DFS%						
Monocytopenic	41.70%	0.011	11 ± 0.6	9.8–12.1	12 ± 1.9	8.1–15.7
Non-monocytopenic	0.00%		9 ± 2.5	3.5–13.6	6 ± 1.2	3.5–8.5
Overall	0.00%		12.1 ± 1.5	9–15.1	9.3 ± 1.9	5.5–13.1

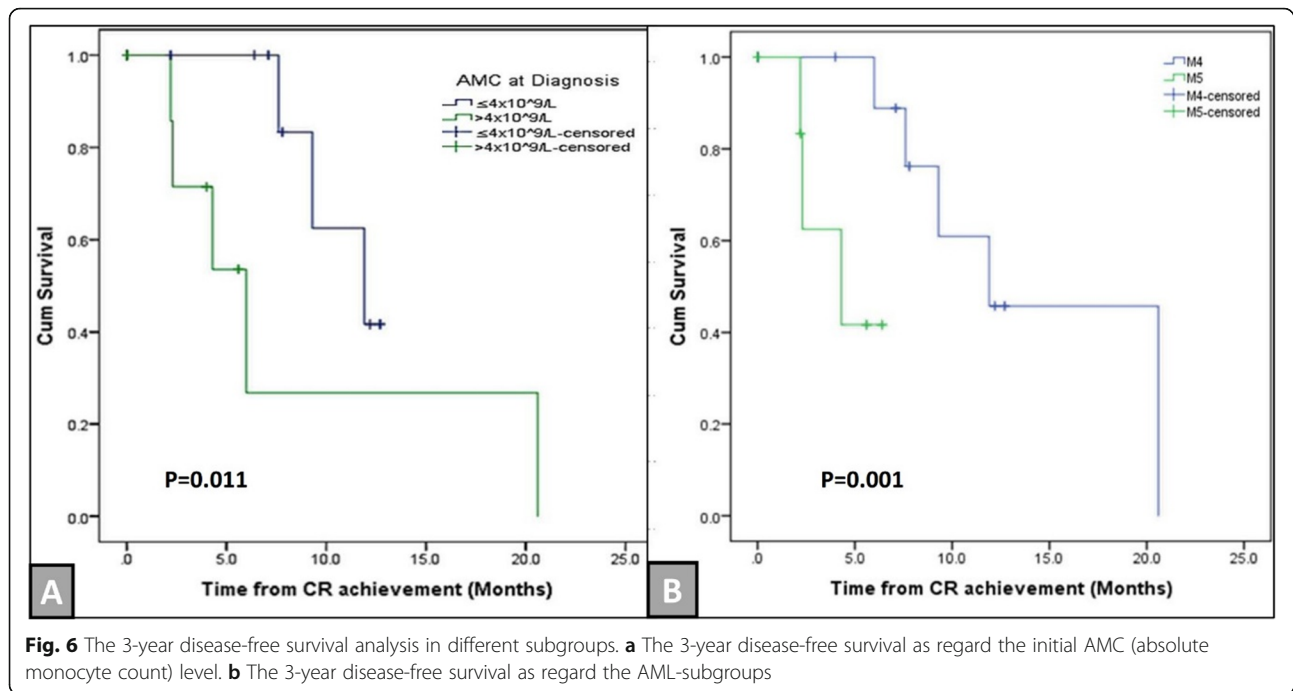
OS overall survival, DFS disease-free survival, SE std. error, 95% CI 95% confidence interval, P value of Log rank test



like myeloid-derived suppressor cells (MDSCs), macrophages, and monocytes, the latter are vital constituent of the inflammatory response, might directly enhance malignant cell growth by the generation of numerous proinflammatory cytokines [25]. Besides, various laboratory-based researches have adopted the principle that tumor-associated macrophages (TAMs), evolved from peripheral blood monocytes, could promote

systemic immunosuppression and significantly contribute to tumor cell invasion, migration, and angiogenesis [26]; even more, high AMC seems to be associated with an increased TAMs density [21]. Accordingly, an elevated AMC level may be a surrogate for higher monocytes and TAMs within the TME subsequently protect the AML cells and eventually carry a poor prognosis for those patients.





One of the limitations in our study is that our findings are derived solely from the CBC used in routine clinical practice, thus we are unable to determine phenotypic and functional changes within the monocyte-derived cell population that may have survival impact. So, we should be prudent when elucidating the results of this study, or probably our results might not be generalizable to other populations. Moreover, the prognostic role of the initial AMC as regard DFS was found only in the univariate

analysis. Thus, it should be revalidated in the multivariate context including genetic information and monocyte subpopulations in the further prospective studies.

Conclusions

This is the first prospective study to evaluate the relationship between the initial AMC and the outcome of AML patients with monocytic differentiation. Despite correlations of low AMC with DFS in univariate analysis,

Table 5 Univariate and multivariate Cox-regression analyses for overall and disease-free survival

Covariates	Overall survival				Disease-free survival			
	Univariate analysis		Multivariate analysis		Univariate analysis		Multivariate analysis	
	HR (95% CI)	P	HR (95% CI)	P	HR (95% CI)	P	HR (95% CI)	P
Age (> 60Y vs. ≤ 60Y)	0.80 (0.28–2.31)	0.682			0.04 (0.00–36.60)	0.35		
Sex (M vs. F)	1.29 (0.63–2.66)	0.485			1.89 (0.58–6.23)	0.293		
PS (> 1 Y vs. ≤ 1)	1.24 (0.50–3.04)	0.642			0.04 (0.00–23.31)	0.317		
PIF (yes vs. no)	7.8 (3.2–19.2)	< 0.001	6.9 (2.7–17.9)	< 0.001	2.5 (0.52–11.92)	0.296		
FAB (M4 vs. M5)	0.74 (0.36–1.52)	0.412			0.61 (0.19–1.98)	0.409		
Intensive induction (yes vs. no)	0.64 (0.31–1.32)	0.226			4.83 (0.99–23.59)	0.052	6.98 (0.69–70.77)	0.1
Initial PB blast %	1.00 (0.99–1.02)	0.552			1.02 (1.00–1.04)	0.055	1.05 (0.99–1.10)	0.092
Initial BM blast %	1.00 (0.99–1.02)	0.693			1.00 (0.98–1.03)	0.797		
Initial TLC × 10 ⁹ /L	1.00 (0.99–1.01)	0.989			1.02 (1.00–1.04)	0.058		
Cytogenetics (favorable vs. others)	0.05 (0.00–56.25)	0.394			0.04 (0.00–36.60)	0.35		
Monocytopenic (yes vs. no)	1.91 (0.90–4.04)	0.091	1.03 (0.46–2.34)	0.941	3.65 (1.22–10.93)	0.021	1.26 (0.10–15.43)	0.856
Initial PLT × 10 ⁹ /L	1.00 (1.00–1.01)	0.002	1.00 (0.99–1.04)	0.338	0.99 (0.97–1.01)	0.686		
Initial Hb g/dL	1.03 (0.85–1.25)	0.75			1.06 (0.77–1.47)	0.715		

PS performance status, FAB French-American-British, PIF primary induction failure, BM bone marrow, PB peripheral blood, TLC total leucocytic count, Hb hemoglobin, PLT platelets, HR hazard ratio, 95%CI 95% confidence interval

AMC did not appear as an independent predictor of survival outcome in multivariate analysis. Moreover, the initial AMC was found to be an independent prognostic factor for response to induction chemotherapy in those populations. Finally, before generalization of these findings, larger prospective multicenter studies considering racial and genetic information and monocyte subpopulations are required.

Abbreviations

AM: Absolute monocyte count; AML: Acute myeloid leukemia; BM: Bone marrow; CBC: Complete blood count; CI: Confidence interval; CR: Complete remission; DFS: Disease-free survival; ED: Early death; FAB: French-American-British; Hb: Hemoglobin; HCT: Hematopoietic cell transplantation; IL: Interleukin; LAMs: Leukemia-associated macrophages; MCP-1: Monocyte chemoattractant protein-1; MDSCs: Myeloid-derived suppressor cells; NCCN: National Comprehensive Cancer Network; NK cells: Natural killer cells; NR: No remission; OS: Overall survival; PB: Peripheral blood; PIF: Primary induction failure; PLT: Platelet; PS: Performance status; *r*: Correlation coefficient; ROC: Receiver operating characteristic; SPSS: Statistical Package for Social Sciences; TAMs: Tumor-associated macrophages; TLC: Total leucocytic count; TME: Tumor microenvironment; TNF- α : Tumor necrosis factor-alpha; VEGF: Vascular endothelial growth factor; WHO: World Health Organization

Acknowledgments

We would like to thank the patients who participated as well as the members of the research and clinical staff at Zagazig Clinical Hematology Unit for their contribution to the care of our patients especially, Dr Shimaa A., Muhammad El Brdecy, Mohamed Yousef, and Mohamed Al-Shamy.

Authors' contributions

AE contributed in conceptualization, methodology, statistical analysis, interpreting the results, designed the figures, investigation, performed patients' clinical assessment, and follow-up as well as drafted this manuscript with help from MR and HE. AF, MA, and HE were involved in planning, organization, supervision and reviewing of the work, and the final manuscript. AB, NZ, and TI performed the measurements, Lab. and histopathologic analysis like CBC, blood smears, flowcytometry BM aspirates/ biopsy. All authors have read and approved the manuscript.

Funding

Not applicable.

Availability of data and materials

All data analyzed and generated during this study are included in this published article.

Ethics approval and consent to participate

This study has been approved by the Faculty of Medicine, Zagazig University, Institutional Review Board (IRB) for human studies (reference number is ZU-IRB #2899-7-6-2016) and the patients have signed an informed written consent.

Consent for publication

An oral consent was obtained from all participating patients to publish their data.

Competing interests

The authors declare that they have no competing interest.

Author details

¹Clinical Hematology Unit, Internal Medicine Department, Faculty of Medicine, Zagazig University, Zagazig, Al-Sharika 44519, Egypt. ²Clinical Pathology Department, Faculty of Medicine, Zagazig University, Zagazig, Egypt. ³Pathology Department, Faculty of Medicine, Zagazig University, Zagazig, Egypt. ⁴Clinical Oncology Department, Faculty of Medicine, Zagazig University, Zagazig, Egypt.

Received: 23 April 2020 Accepted: 2 July 2020

Published online: 03 August 2020

References

1. Siegel RL, Miller KD, Jemal A. Cancer statistics. *CA Cancer J Clin*. 2019;69:7–34. <https://doi.org/10.3322/caac.21551> Epub 2019 Jan 8.
2. Liersch R, Müller-Tidow C, Berdel WE, Krug U. Prognostic factors for acute myeloid leukaemia in adults—biological significance and clinical use. *Br J Haematol*. 2014;165:17–38.
3. Feng J, Zhang W, Wu J, Gao S, Ye H, Sun L, Chen Y, Yu K, Xing C-YY. Effect of initial absolute monocyte count on survival outcome of patients with de novo non-M3 acute myeloid leukemia. *Leuk Lymphoma*. 2016;57:2548–54. <https://doi.org/10.3109/10428194.2016.1166491>.
4. Wilcox RA, Ristow K, Habermann TM, Inwards DJ, Micallef INM, Johnston PB, Colgan JP, Nowakowski GS, Ansell SM, Witzig TE, Markovic SN, Porrata L. The absolute monocyte and lymphocyte prognostic score predicts survival and identifies high-risk patients in diffuse large-B-cell lymphoma. *Leukemia*. 2011;25:1502–9. <https://doi.org/10.1038/leu.2011.112>.
5. Wilcox RA, Ristow K, Habermann TM, Inwards DJ, Micallef INM, Johnston PB, Colgan JP, Nowakowski GS, Ansell SM, Witzig TE, Markovic SN, Porrata L. The absolute monocyte count is associated with overall survival in patients newly diagnosed with follicular lymphoma. *Leuk Lymphoma*. 2012;53:575–80. <https://doi.org/10.3109/10428194.2011.637211>.
6. Porrata LF, Ristow K, Colgan JP, Habermann TM, Witzig TE, Inwards DJ, Ansell SM, Micallef IN, Johnston PB, Nowakowski GS, Thompson C, Markovic SN. Peripheral blood lymphocyte/monocyte ratio at diagnosis and survival in classical Hodgkin's lymphoma. *Haematologica*. 2012;97:262–9. <https://doi.org/10.3324/haematol.2011.050138>.
7. E. Malek, T. Dosani, R. Pinto, F. Covut, H. Akabane, J.J. Driscoll, M. De Lima, Immunologic status evaluated by the absolute lymphocyte/monocyte ratio provides a powerful prognostic tool for newly diagnosed multiple myeloma, (2016) 1862–1862. doi:<https://doi.org/10.1182/blood.V128.22.1862.1862>.
8. Herishanu Y, Kay S, Sarid N, Kohan P, Braunstein R, Rotman R, Deutsch V, Ben-Ezra J, Naparstek E, Perry C, Katz BZ. Absolute monocyte count trichotomizes chronic lymphocytic leukemia into high risk patients with immune dysregulation, disease progression and poor survival. *Leuk Res*. 2013;37:1222–8. <https://doi.org/10.1016/j.leukres.2013.07.017>.
9. Ma WT, Gao F, Gu K, Chen DK. The role of monocytes and macrophages in autoimmune diseases: a comprehensive review. *Front Immunol*. 2019;10. <https://doi.org/10.3389/fimmu.2019.01140>.
10. Kenneth Kaushansky ML, Josef Prchal MML, Oliver Press LB, Caligiuri M. *Williams Hematology* 9th edition; 2015.
11. Döhner H, Estey EH, Amadori S, Appelbaum FR, Büchner T, Burnett AK, Dombret H, Fenaux P, Grimwade D, Larson RA, Lo-Coco F. Diagnosis and management of acute myeloid leukemia in adults: recommendations from an international expert panel, on behalf of the European LeukemiaNet. *Blood*. 2010;115:453–74. <https://doi.org/10.1182/blood-2012-03-362608>.
12. Oken MM, Creech RH, Tormey DC, Horton J, Davis TE, McFadden ET, et al. Toxicity and response criteria of the eastern cooperative oncology group. *Am J Clin Oncol*. 1982;5:649–55.
13. Bennett JM, Catovsky D, Daniel MT, Flandrin G, Galton DAG, Gralnick HR, Sultan C. Proposals for the classification of the acute leukaemias French-American-British (FAB) co-operative group. *Br J Haematol*. 1976. <https://doi.org/10.1111/j.1365-2141.1976.tb03563.x>.
14. Arber DA, Orazi A, Hasserjian R, Thiele J, Borowitz MJ, Le Beau MM, et al. The 2016 revision to the World Health Organization classification of myeloid neoplasms and acute leukemia. *Blood*. 2016;127:2391–405. <https://doi.org/10.1182/blood-2016-03-643544>.
15. Harnden DG, Klinger HP. An international system for human cytogenetic nomenclature (1985): Karger Basel etc; 1985.
16. Tefferi A, Letendre L. Going beyond 7 + 3 regimens in the treatment of adult acute myeloid leukemia. *J Clin Oncol*. 2012;30:2425–8. <https://doi.org/10.1200/jco.2011.38.9601>.
17. Cheson BD, Bennett JM, Kopecky KJ, Büchner T, Willman CL, Estey EH, et al. Revised recommendations of the international working group for diagnosis, standardization of response criteria, treatment outcomes, and reporting standards for therapeutic trials in acute myeloid leukemia. *J Clin Oncol*. 2003;21:4642–9.
18. Döhner H, Estey E, Grimwade D, Amadori S, Appelbaum FR, Büchner T, Dombret H, Ebert BL, Fenaux P, Larson RA, Levine RL, Lo-Coco F, Naoe T,

- Niederwieser D, Ossenkoppele GJ, Sanz M, Sierra J, Tallman MS, Tien HF, Wei AH, Löwenberg B, Bloomfield CD. Diagnosis and management of AML in adults: 2017 ELN recommendations from an international expert panel. *Blood*. 2017;129:424–47. <https://doi.org/10.1182/blood-2016-08-733196>.
19. Tallman MS, Wang ES, Altman JK, Appelbaum FR, Bhatt VR, Bixby D, Coutre SE, De Lima M, Fathi AT, Fiorella M, Foran JM, Hall AC, Jacoby M, Lancet J, LeBlanc TW, Mannis G, Marcucci G, Martin MG, Mims A, O'Donnell MR, Olin R, Peker D, Perl A, Pollyea DA, Pratz K, Prebet T, Ravandi F, Shami PJ, Stone RM, Strickland SA, Wieduwilt M, Gregory KM, Hammond L, Ogba N. Acute myeloid leukemia, version 3.2019. *JNCCN J Natl Compr Cancer Netw*. 2019; 17:721–49. <https://doi.org/10.6004/jnccn.2019.0028>.
 20. Buggins AGS, Milojkovic D, Arno MJ, Lea NC, Mufti GJ, Thomas NSB, Hirst WJR. Microenvironment produced by acute myeloid leukemia cells prevents T cell activation and proliferation by inhibition of NF- κ B, c-Myc, and pRb pathways. *J Immunol*. 2001;167:6021–30. <https://doi.org/10.4049/jimmunol.167.10.6021>.
 21. Shibutani M, Maeda K, Nagahara H, Fukuoka T, Nakao S, Matsutani S, Hirakawa K, Ohira M. The peripheral monocyte count is associated with the density of tumor-associated macrophages in the tumor microenvironment of colorectal cancer: a retrospective study. *BMC Cancer*. 2017;17:404. <https://doi.org/10.1186/s12885-017-3395-1>.
 22. Ismail MM, Abdulateef NAB. Absolute monocyte count is superior than absolute lymphocyte count at day 28 as an independent prognostic factor in acute myeloid leukemia. *Indian J Hematol Blood Transfus*. 2019;35:100–8. <https://doi.org/10.1007/s12288-018-0976-3>.
 23. Bar M, Othus M, Park HM, Sandhu V, Chen X, Wood BL, Estey E. Elevated lymphocyte count at time of acute myeloid leukemia diagnosis is associated with shorter remission. *Leuk Lymphoma*. 2015;56:3109–15. <https://doi.org/10.3109/10428194.2015.1020060>.
 24. Sun YX, Kong HL, Liu CF, Yu S, Tian T, Ma DX, Ji CY. The imbalanced profile and clinical significance of T helper associated cytokines in bone marrow microenvironment of the patients with acute myeloid leukemia. *Hum Immunol*. 2014;75:113–8. <https://doi.org/10.1016/j.humimm.2013.11.014>.
 25. Grivennikov SI, Greten FR, Karin M. Immunity, inflammation, and cancer. *Cell*. 2010;140:883–99. <https://doi.org/10.1016/j.cell.2010.01.025>.
 26. Liu Y, Cao X. The origin and function of tumor-associated macrophages. *Cell Mol Immunol*. 2015;12:1–4. <https://doi.org/10.1038/cmi.2014.83>.

Publisher's Note

Springer Nature remains neutral with regard to jurisdictional claims in published maps and institutional affiliations.

Submit your manuscript to a SpringerOpen[®] journal and benefit from:

- Convenient online submission
- Rigorous peer review
- Open access: articles freely available online
- High visibility within the field
- Retaining the copyright to your article

Submit your next manuscript at ► [springeropen.com](https://www.springeropen.com)